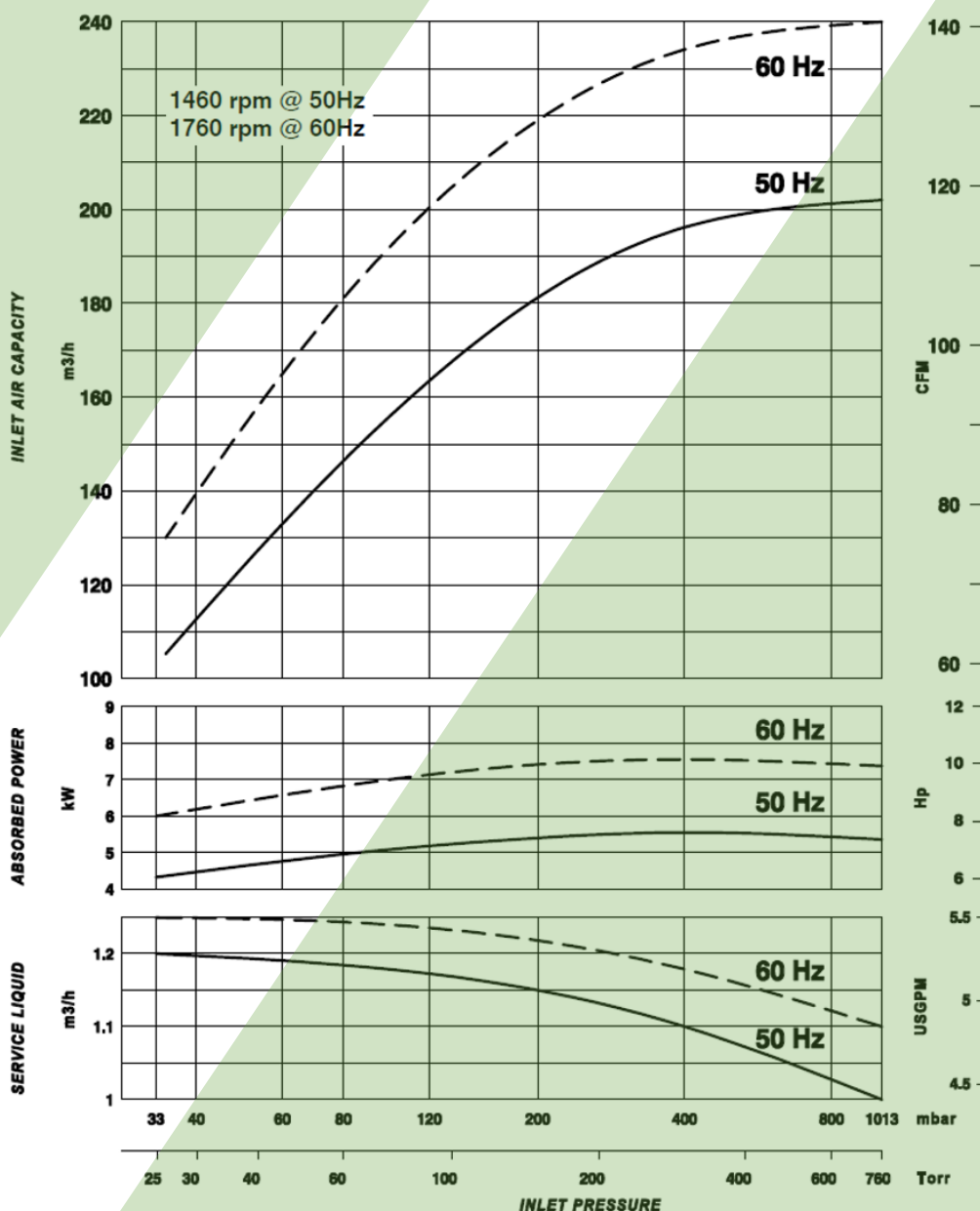


Vacuum Technologies
A Unit of ASCO POMPE

LIQUID RING VACUUM PUMP Model AVM 256

PERFORMANCE FEATURES

- Vary port valve design for optimum efficiency across all inlet pressures.
- Near-isothermal compression to safely handle any thermally sensitive gas.
- Right choice for any wet process.
- High efficiency IE3 motor for EU market
- [CE] TR CU 010/2011 certification.
- Motor option for US & Canada market (NEMA-CSA).



NOTES :

The given data are referred to dry air at the temperature of 20°C, at the atmospheric discharge pressure (1013 mbar), and of supply of service water at 15°C temperature. Performances tolerance $\pm 10\%$.

Product specifications and data are subject to change without notice.

Performance test in compliance with PNEUROP 6612

LIQUID RING VACUUM PUMP

Model AVM 256



APPLICATIONS

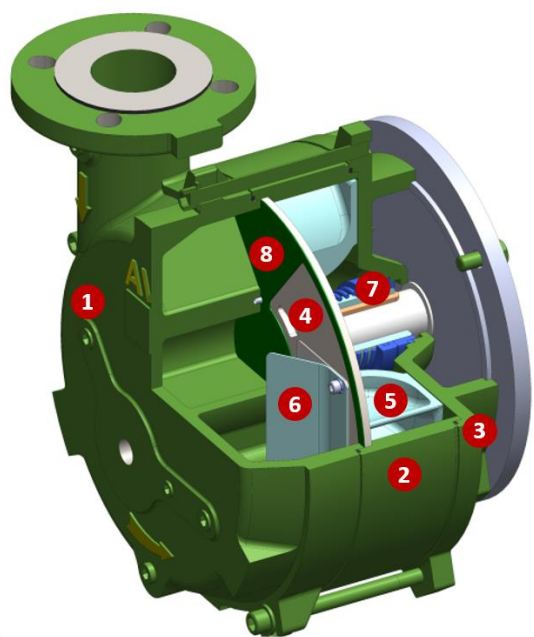
- Vacuum industrial processing
- Sterilization
- Extrusion
- Degassing
- Evaporation and distillation
- Priming
- Vacuum sewage
- Bottling
- Depoultry
- Fish farming

FEATURES

AVM 256 is a simple, compact and reliable liquid ring pump capable to handle almost any gas mixture including vapors in vacuum or overpressure. The operating principle combined to its accurate design allow for severe duty with high tolerance of liquid carry over. The wide range of suction pressure (down to 33 mbar abs) makes the AVM series versatile and suitable for many industrial applications and more. The stainless-steel port plate and impeller are designed and manufactured with accurate process to reach outstanding and steady performance.

The low operating speed associated with the robust and simplified construction grant long service life with minimal maintenance. AVM 256 is available in standard version or full stainless-steel AISI 316 (wetted parts). Other material options, on request.

MATERIALS OF CONSTRUCTION



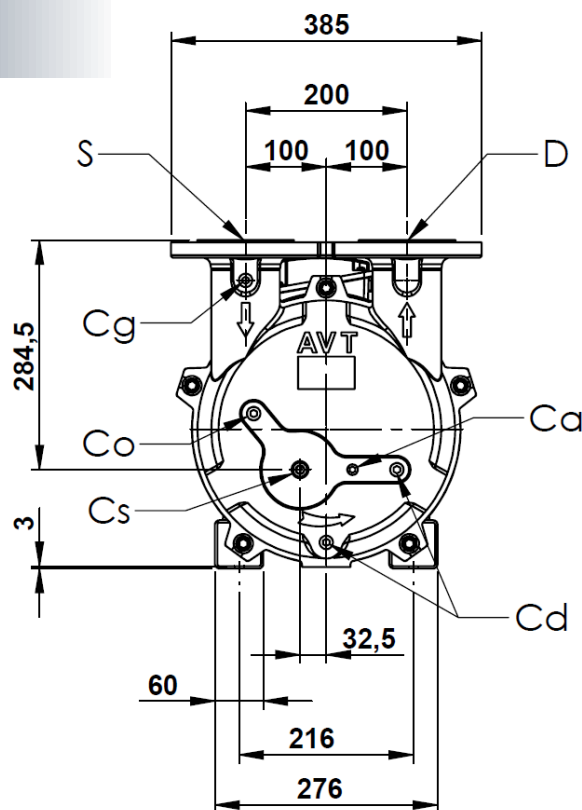
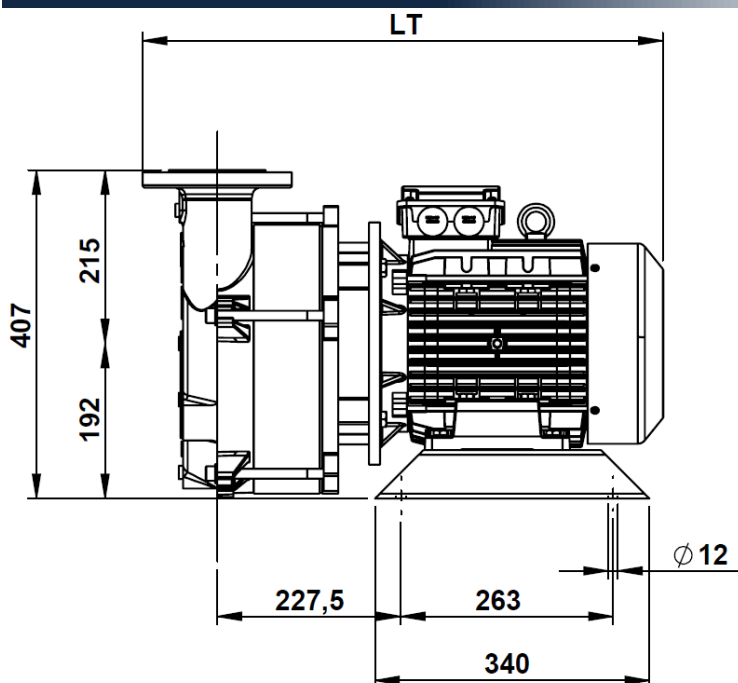
| # | PART | CS | SS |
|---|------------------------------|------------------------------|-------------------------|
| 1 | Suction and discharge casing | CAST IRON (ASTM A278 CL.275) | SS 316 (ASTM A351-CF8M) |
| 2 | Housing (part A) | CAST IRON (ASTM S355) | SS 316 (ASTM A240) |
| 3 | Housing (part B) | CAST IRON (ASTM A278 CL.275) | SS 316 (ASTM A351-CF8M) |
| 4 | Port plate | SS 316 (ASTM A240) | SS 316 (ASTM A240) |
| 5 | Impeller | SS 316 (ASTM A351-CF8M) | SS 316 (ASTM A351-CF8M) |
| 6 | Vary port valve | PTFE | PTFE |
| 7 | Mechanical seal | CARBON/SIC/VITON/SS316 | CARBON/SIC/FEP/SS316 |
| 8 | Gasket | ARAMIDIC FIBER | ARAMIDIC FIBER |



Model AVM 256

LIQUID RING VACUUM PUMP

2D DRAWING



CONNECTIONS

| | | |
|----|------------|-----------------|
| S | DN65-2"1/2 | Suction |
| D | DN65-2"1/2 | Discharge |
| Cs | G 1/2" | Service liquid |
| Cd | G 3/8" | Pump drain |
| Co | G 3/8" | Overflow |
| Ca | G 1/4" | Anti-cavitation |
| Cg | G 3/8" | Vacuum gauge |

Dimensions [mm]

| PUMP | kW | Hz | IEC | RPM | Weight [Kg] | LT |
|------------|-----|----|------|------|-------------|-----|
| AVM 256-50 | 5,5 | 50 | 132M | 1460 | 128 | 645 |
| AVM 256-60 | 7,5 | 60 | 132M | 1760 | 139 | 686 |

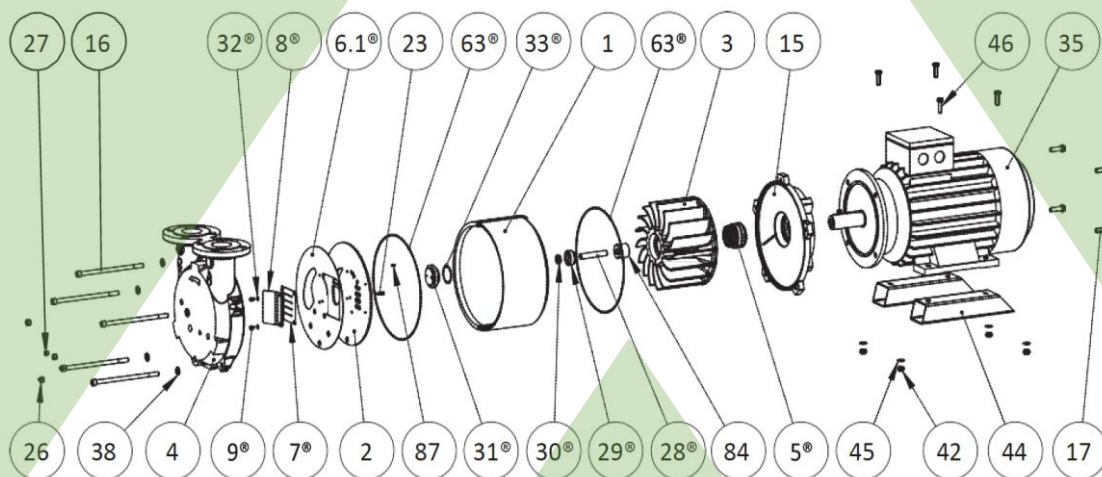
TECHNICAL SPECIFICATIONS

| | AVM 256-50 | AVM 256-60 |
|------------------------|-----------------------|-----------------------|
| Nominal capacity | 188 m ³ /h | 225 m ³ /h |
| Ultimate pressure | 33 mbara | 33 mbara |
| Dry weight | 128 kg | 139 kg |
| Max gas temperature | 120°C | 120°C |
| Max liquid temperature | 50°C | 50°C |
| Casing design pressure | 3 barg | 3 barg |

| | AVM 256-50 | AVM 256-60 |
|--------------------|---------------------|---------------------|
| Noise level | 72 dBA | 72 dBA |
| Motor power | 5,5 kW | 7,5 kW |
| Motor speed | 1460 rpm | 1760 rpm |
| Motor type | TEFC | TEFC |
| Motor efficiency | IE3 | IE3 |
| Volt./Ph/Frequency | 230-400V/ 3/50Hz | 277-480V/ 3/60Hz |

SPARE PARTS AVAILABLE

LIQUID RING VACUUM PUMP Model AVM 256

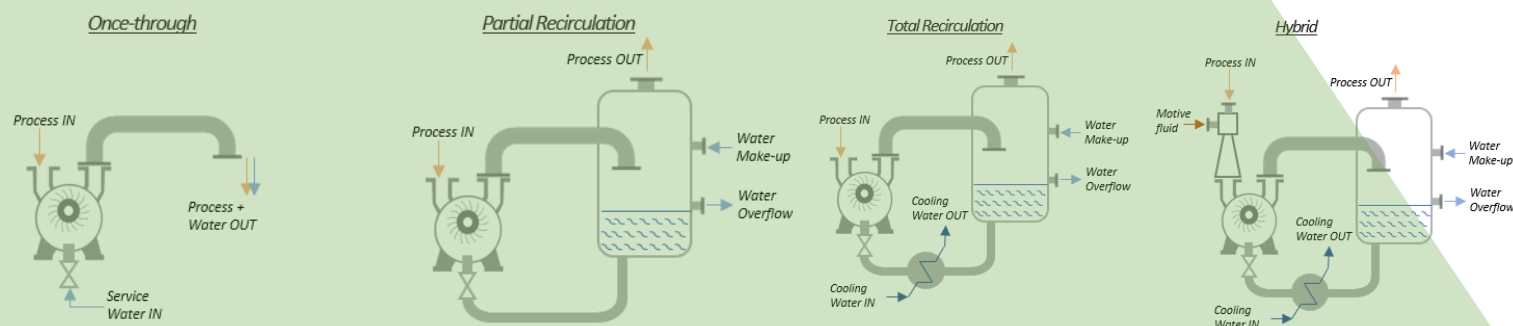


| Pos. | Description | Q.ty |
|------------------|--|------|
| 1 | Casing | 1 |
| 2 | Port plate | 1 |
| 3 | Impeller | 1 |
| 4 | Suction/discharge casing | 1 |
| 5 [®] | Mechanical seal | 1 |
| 6.1 [®] | Suction/discharge casing-port plate gasket | 1 |
| 7 [®] | Vari-port valve | 1 |
| 8 [®] | Valve plate | 1 |
| 9 [®] | Screw | 2 |
| 15 | Seal-motor flange | 1 |
| 16 | Screw | 5 |
| 17 | Screw | 4 |
| 23 | Screw | 1 |
| 26 | Plug | 3 |
| 27 | Plug | 1 |
| 28 [®] | Stud | 1 |

| Pos. | Description | Q.ty |
|-----------------|----------------|------|
| 29 [®] | Adjusting nut | 1 |
| 30 [®] | Nut | 1 |
| 31 [®] | Impeller nut | 1 |
| 32 [®] | Washer | 2 |
| 33 [®] | O-Ring | 1 |
| 35 | Electric motor | 1 |
| 38 | Washer | 5 |
| 42 | Nut | 4 |
| 44 | Motor foot | 2 |
| 45 | Washer | 4 |
| 46 | Screw | 4 |
| 63 [®] | O-Ring | 2 |
| 87 | Locating pin | 1 |

[®] Repair kit part

OPERATION MODES



Asco Vacuum Technologies

Asco Pompe S.r.l.

Via Silvio Pellico, 6/8

20089 Rozzano (MI) – Italy

Phone: +39 02 892571

Fax: +39 02 89257201

Mail: info@ascovacuum.com

www.ascovacuum.com